

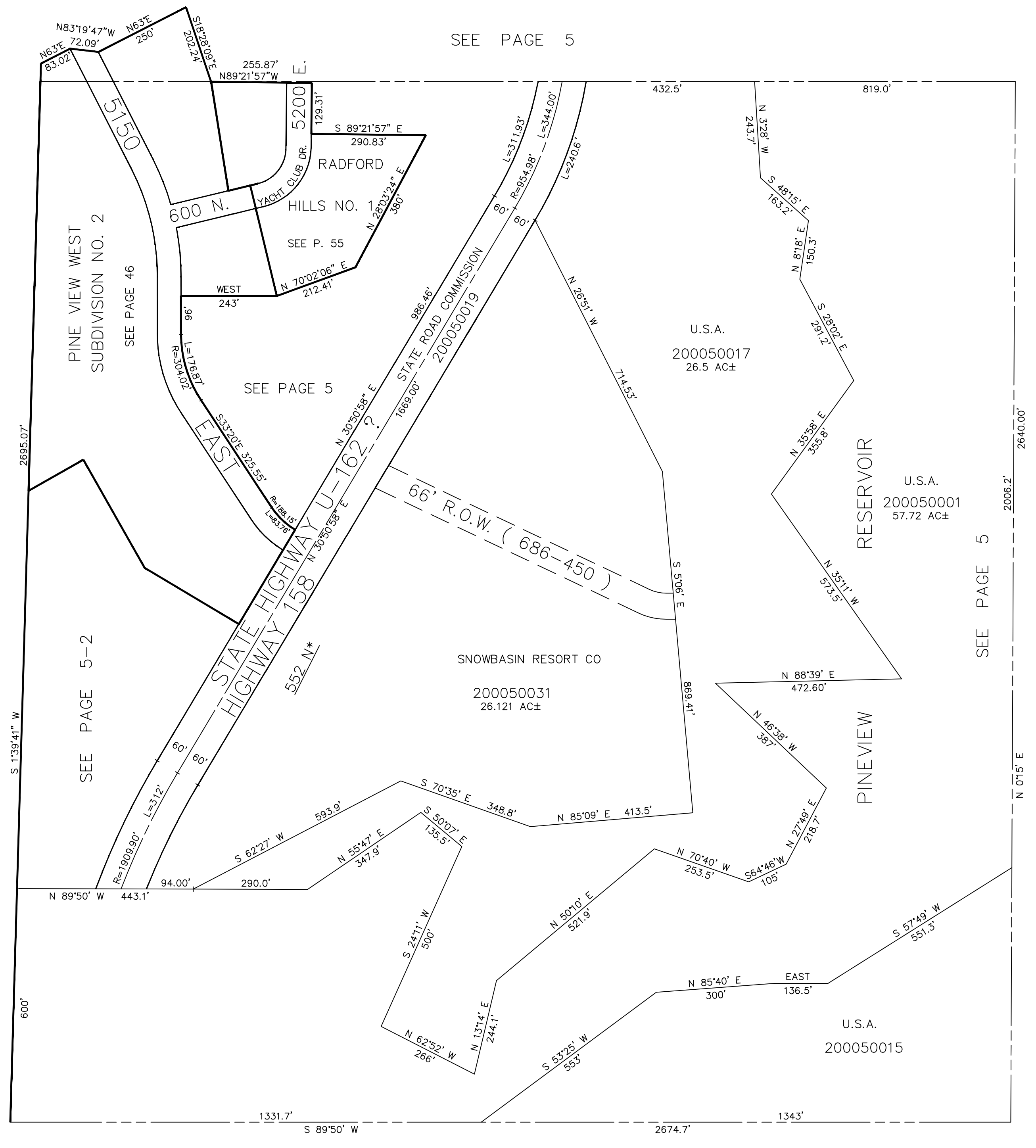
SE 1/4
SECTION 10, T.6N., R.1E., S.L.B. & M.

TAXING UNIT: 317

IN WEBER COUNTY
SCALE 1" = 200'

SEE PAGE 5

SPURLOCK SUBDIVISION PLAT I
SEE PAGE 6 & 7



*ADDRESS AFFIDAVIT E#2764206

SEE PAGE 16

SEE PAGE 8

SEE PAGE 5

SEE PAGE 5-2

SEE PAGE 46

SEE PAGE 5

SEE P. 55